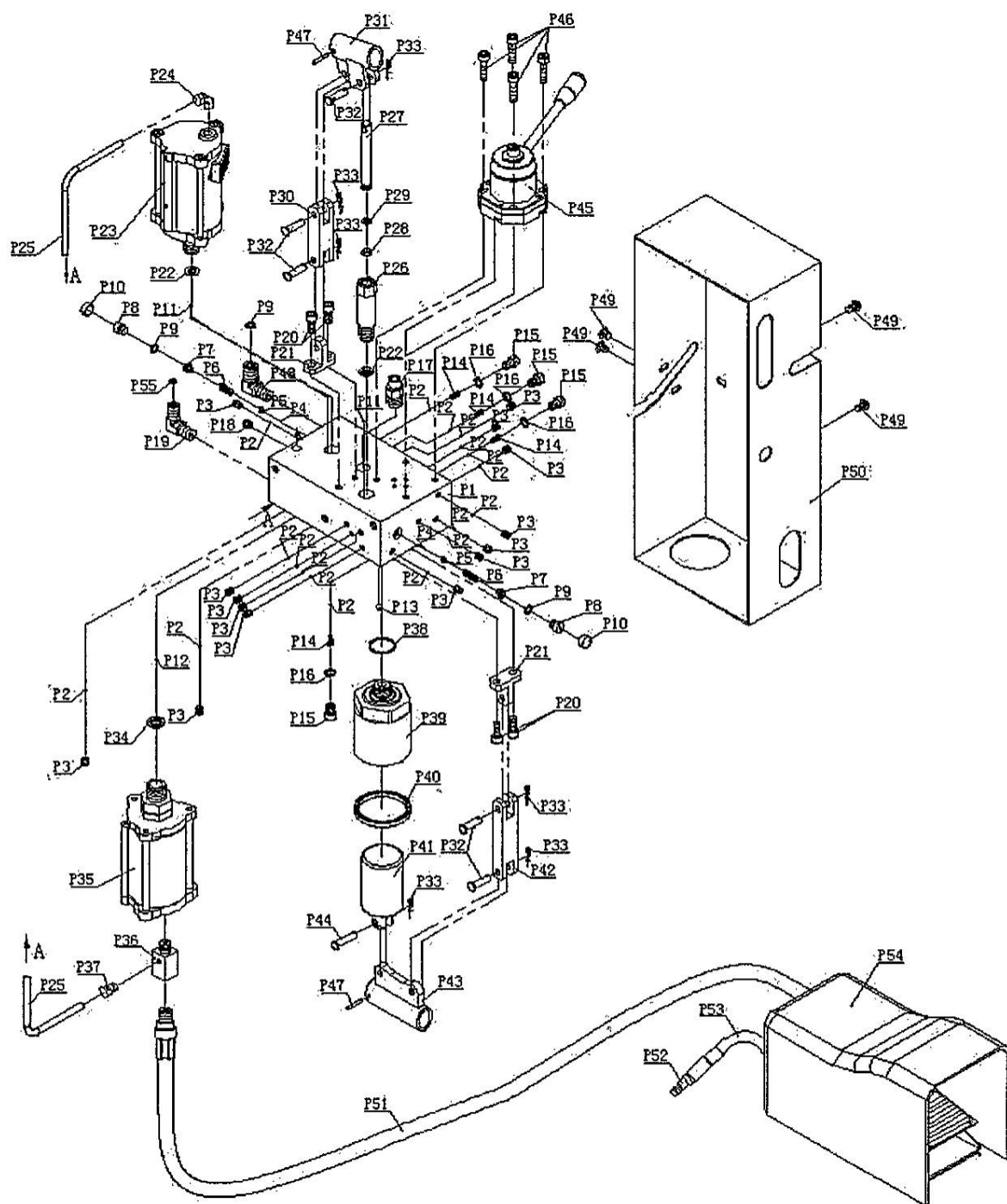


5. Parts List of Pump



No.	Description	Qty.	No.	Description	Qty.
P1	Pump	1	P29	Circlip	1
P2	Steel Ball ϕ 6.0000	18	P30	Connecting Bar	1
P3	Hexagon Socket Set Screw M8*10	14	P31	Handle Socket	1
P4	Steel Ball ϕ 3.0000	2	P32	Pin8*30	5
P5	Steel Ball Base	2	P33	R-Pin	6
P6	Spring	2	P34	Copper Washer	1
P7	Screw	2	P35	Air Motor	1
P8	Plug Screw	2	P36	Branch Joint	1
P9	O-ring	2	P37	Connector	1
P10	Cover	2	P38	O-Ring 30*2	1
P11	Steel Ball ϕ 5.0000	2	P39	Big Pump Core Base	1
P12	Steel Ball ϕ 7.1438	1	P40	U-Ring NOK53*63*6	1
P13	Steel Ball ϕ 8.0000	1	P41	Big Pump Core	1
P14	Spring	4	P42	Big Connecting Bar	1
P15	Plug Screw	4	P43	Handle Socket For Low Pressure	1
P16	Copper Washer TT-245	4	P44	Pin 8*35	1
P17	NPT1/2" Connector	1	P45	Manual selector valve	1
P18	NPT1/4" Plug	1	P46	Hexagon Screw M8*35	4
P19	Fitting	1	P47	Spring Pin ϕ 4*26	2
P20	Hexagon Bolt M8*20	4	P48	Fitting	1
P21	Connecting Rod Base	2	P49	Flat-head Screw GB70.2-M8*10	4
P22	Copper Washer TT-244	2	P50	Pump Cover	1
P23	Air Motor	1	P51	Air Hose 1	1
P24	NPT1/4"-8 Connector	1	P52	Air Hose Joint	1
P25	PU Tube 8*6	1	P53	Air Hose 2	1
P26	Pump Core Base	1	P54	Air Valve	1
P27	Pump Core	1	P55	O-Ring 9*1.9	1
P28	O-ring 6.5*3	1			

Pump Features: The pump assy is composed by four pumps, two for high pressure (one is manual and the other is air) which are located on the top of the pump assy; the other two for low pressure (one is manual and the other is air) which are located in the lower position; and there are one selector valve on the top of the pump assy.

The two pumps for low pressure are used for quick extension of the piston rod without pressure; and the two pumps for high pressure are working when under pressure. The selector valve is used to control the piston rod's returning or extension.